



# MicroIN

S T U D I O

A complete guide to the continuous coating systems we apply — microcement, lime mortar and Italian decorative finishes.

---

STUDIO

MicroIN Studio

ORIGIN

Ibiza · South Florida

SYSTEMS

Ten most-used · European

• WHO WE ARE

# Mediterranean craft, *applied in South Florida.*

MicroIN is a continuous-coating studio born in Ibiza in 2013 and now operating across Europe and South Florida. We specialize in seamless architectural surfaces, working only with leading European manufacturers — and we work with architects and designers, not around them.

---

12+

YEARS OF CRAFT

2

CONTINENTS

400+

PROJECTS DELIVERED

• WHY A SURFACE WITH NO JOINTS

01

## Seamless.

No grout lines. One continuous plane across floors, walls and steps — light reads it as a single material.

03

## Made on *site.*

Hand-trowelled and colour-matched in place, so the finish belongs to the space — not a tile chosen from a box.

02

## Over the *existing.*

Two to three millimetres applied directly over tile, concrete or screed. Rarely any demolition, far less downtime.

04

## Built to *last.*

A full system — primer, base, finish, sealer — engineered for the wear, water and traffic of each room.

## • THE COLLECTION

# The ten systems *we use most.*

Sourced from leading European manufacturers, specified for performance and applied by European-trained installers. These are the ten we work with most — not the limit of what we can do.

---

01 **Water-based microcement**  
Mineral · all surfaces

---

02 **Epoxy microcement**  
Hydrophobic · wet areas

---

03 **Stone Pool**  
Mortar · pools, wet areas & floors

---

04 **Armonie Argilla**  
Clay-based wall finish

---

05 **Valmetal**  
Metallic wall finish

---

06 **Meteore 10**  
Concrete-effect finish

---

07 **Valrenna**  
Travertine effect · walls & wet areas

---

08 **Lime mortar**  
100% lime · walls & façades

---

09 **Lime wash**  
Lime wash · interior walls & ceilings

---

10 **Venetian plaster**  
Polished lime · marmorino



01 MINERAL SYSTEM · WATER-BASED

---

# Water-based *microcement*.

Continuous coating based on cement and water-dispersed polymers. Applied in 2–3 mm thin layers, directly over existing surfaces — no grout lines, no demolition.

---

COMPOSITION

Cement · water-based acrylic resins · mineral pigments

IDEAL USE

All surfaces — floors, walls, façades, ceilings · furniture

SYSTEM THICKNESS

2–3 mm · 5 layers (mesh, primer, base, finish, sealer ×2)

WHY WATER-BASED

Solvent-free · clean to apply · homogeneous color

PALETTE



+ CUSTOM



02 EPOXY SYSTEM · HYDROPHOBIC

# Epoxy *microcement*.

Microcement on a two-component epoxy matrix. Maximum chemical and water resistance — the technical option for wet and high-traffic areas.

COMPOSITION

2C epoxy resins + mineral fillers + PU top sealer

SYSTEM THICKNESS

3–4 mm · mesh-reinforced · PU sealer ×3

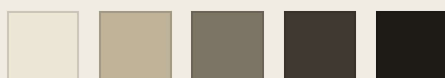
IDEAL USE

Showers, bathrooms, spas, kitchens, high-traffic

RESISTANCE

Waterproof · chemical-resistant · high slip resistance

PALETTE



+ CUSTOM



03 CONTINUOUS MORTAR · FLOORS & POOLS

# Stone *Pool.*

Multi-layer mortar for permanent water immersion and high-traffic floors. Sandy stone-like texture — full visual continuity from deck to waterline.

COMPOSITION

Polymer cement mortar · silica · UV-stable pigments

IDEAL USE

Pools, spas, infinity edges · interior & exterior floors

SYSTEM THICKNESS

3–5 mm · waterproof primer + base + PU sealer ×3

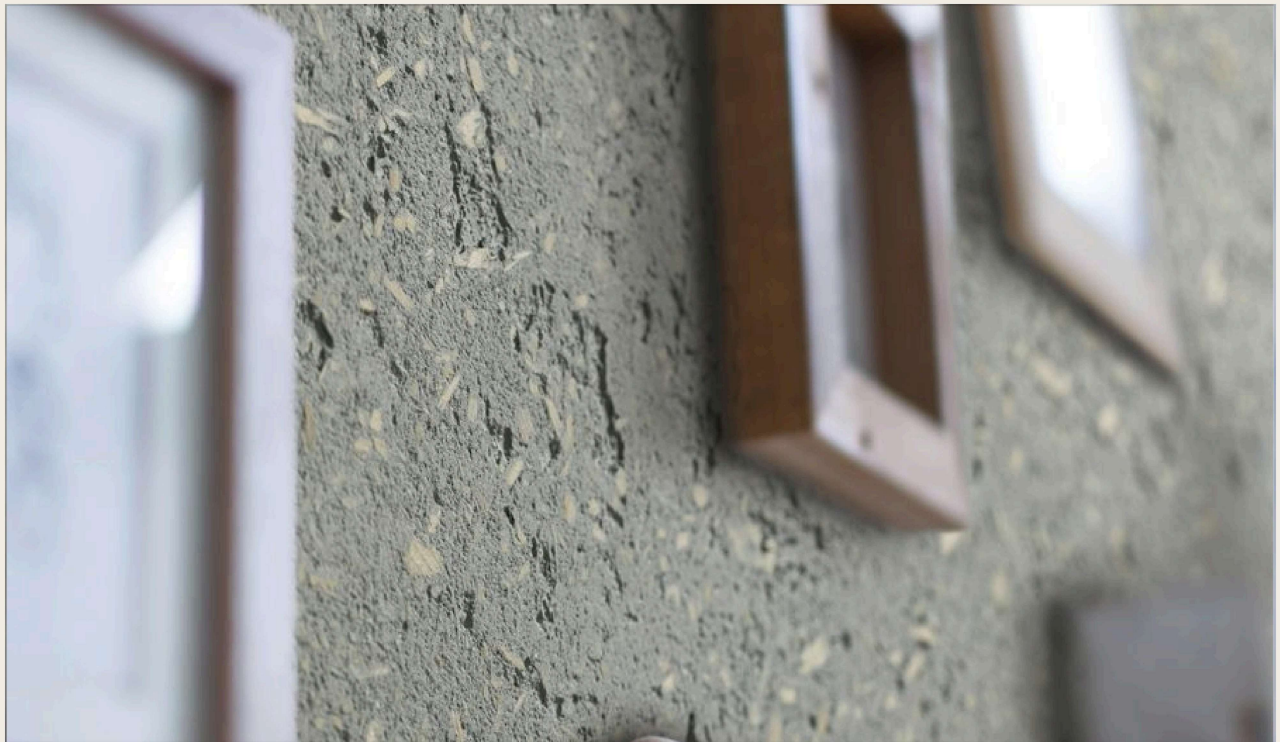
RESISTANCE

Permanent immersion · chlorine and saltwater safe

PALETTE



+ CUSTOM



04 DECORATIVE WALL FINISH · CLAY-BASED

---

# Armonie *Argilla.*

Wall coating based on natural clay. Soft, slightly irregular texture with warm reflections that shift with light. The feel of a hand-made wall.

---

COMPOSITION

Natural clay · mineral fillers · water-based binders

IDEAL USE

Interior walls · residential · hospitality

FINISH

Matte textured · trowelled · subtle warm veining

WHY ARGILLA

Mineral base · breathable · artisanal feel

PALETTE



+ CUSTOM



## 05 DECORATIVE WALL FINISH · METAL EFFECT

# Valmetal.

Wall finish with real metallic pigments — iron, copper, bronze, pewter. Shifting reflections by light angle, without the constraints of a metal panel.

### COMPOSITION

Water-based resins + real metallic particles

### IDEAL USE

Feature walls, lobbies, receptions · interior

### FINISH

Matte or satin metallic · multiple textures · oxidation activator optional

### CHARACTER

Evolves with light and time · intentional patina

### PALETTE



+ CUSTOM



06 DECORATIVE WALL FINISH · CONCRETE EFFECT

# Meteore *10.*

Our most versatile wall system. Trowelled finish reading as polished concrete or modern stucco — minimalist, continuous, with subtle depth.

COMPOSITION

Fine-grain acrylic paste + mineral fillers

IDEAL USE

Interior walls and ceilings · residential · hospitality

FINISH

Multi-layer trowelled · matte, satin or waxed

WHY METEORE

Broad color range · contemporary finish

PALETTE



+ CUSTOM



07 DECORATIVE WALL FINISH · TRAVERTINE EFFECT

# Valrenna.

A decorative finish that reproduces travertine and sandstone. Natural veining and a monolithic stone-block read — on any wall, without the weight of real stone.

COMPOSITION

Mineral paste with selected aggregates + binders

IDEAL USE

Interior walls · wet areas · façades

FINISH

Stone-like texture · vertical/horizontal veining · matte

CHARACTER

One of the most architectural options in our range

PALETTE



+ CUSTOM



08 MINERAL SYSTEM · 100% LIME

---

# Lime *mortar.*

Traditional European lime-based finish reformulated for modern performance. Natural, breathable and antibacterial — it develops a living patina with time.

---

## COMPOSITION

Air-lime · calcareous aggregates · natural pigments

## IDEAL USE

Interior & exterior walls · façades · restoration

## SYSTEM THICKNESS

3–5 mm · base + burnished/matte + natural wax

## WHY LIME

Breathable · inhibits mold · naturally antibacterial

## PALETTE



+ CUSTOM



09 MINERAL FINISH · LIME WASH

# Lime wash.

A thin, breathable lime coating brushed in cross-hatched layers. Soft chalky matte with a gentle cloud-like movement — the most natural and understated of the mineral finishes.

COMPOSITION

Slaked lime · natural mineral pigments · water

APPLICATION

2–3 thin brushed coats · cross-hatch · matte

IDEAL USE

Interior walls and ceilings · bedrooms · living spaces

WHY LIME WASH

Breathable · antibacterial · soft chalky depth

PALETTE



+ CUSTOM



10 POLISHED LIME PLASTER · MARMORINO

# Venetian *plaster.*

Burnished lime plaster in the Venetian tradition — marmorino. Multiple thin coats compressed to a smooth, stone-like sheen with marble-like depth and movement.

## COMPOSITION

Slaked lime · fine marble dust · natural pigments

## IDEAL USE

Interior walls and ceilings · feature walls

## FINISH

Burnished satin to polished gloss · waxed

## CHARACTER

Marble depth · luminous · centuries-old technique

## PALETTE



+ CUSTOM

## • USAGE GUIDE

# Which material *for which space.*

A quick reference. ● recommended · ○ possible. We always confirm the system on site, against the substrate and the project conditions.

	FLOORS	WALLS	WET AREAS	POOLS	FAÇADES	CEILINGS
Water-based microcement	●	●	○	–	●	●
Epoxy microcement	●	●	●	–	–	●
Stone Pool	●	○	●	●	–	–
Armonie Argilla	–	●	–	–	–	●
Valmetal	–	●	–	–	–	●
Meteore 10	–	●	–	–	–	●
Valrenna	–	●	●	–	●	●
Lime mortar	–	●	–	–	●	●
Lime wash	–	●	–	–	–	●
Venetian plaster	–	●	–	–	–	●

Recommended

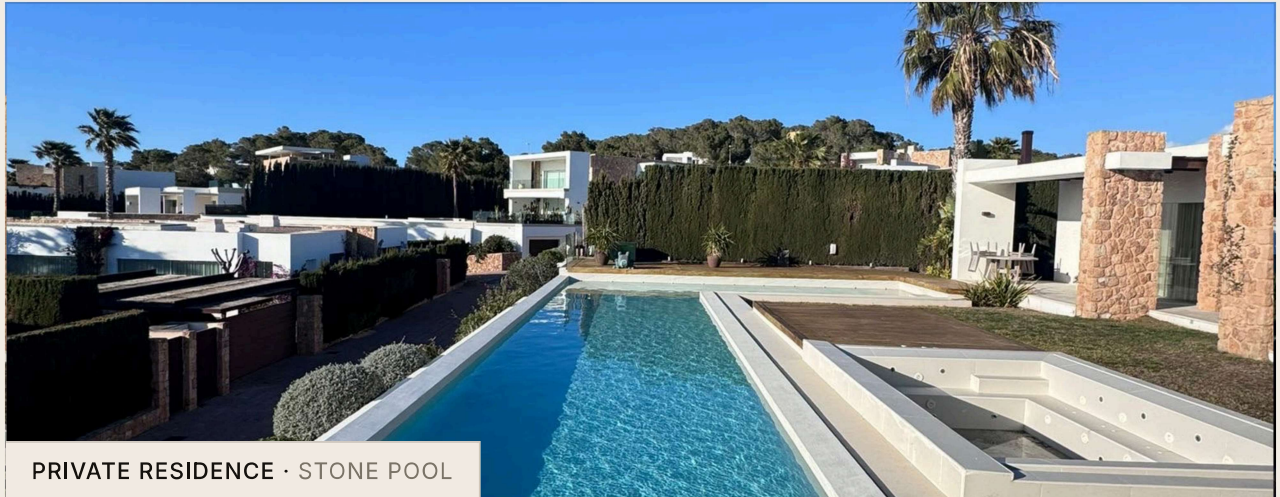
Possible

\* Microcement also applies to interior &amp; exterior furniture.

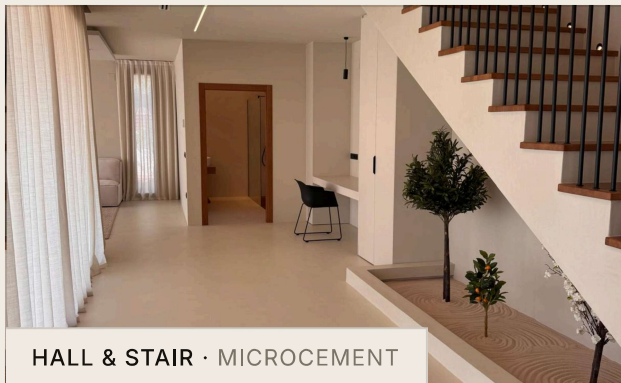
• SELECTED WORK

# Proof, *in place.*

A few of the surfaces we have delivered across Europe and South Florida.



PRIVATE RESIDENCE · STONE POOL



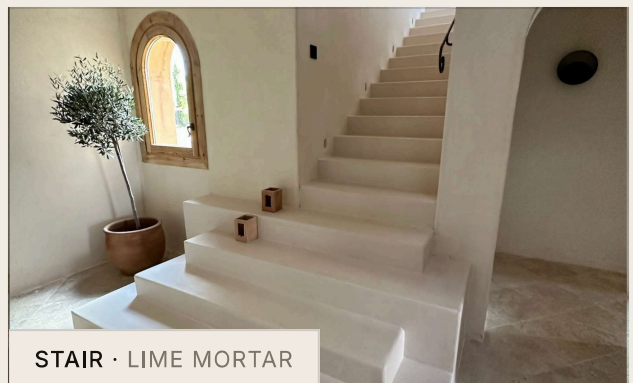
HALL & STAIR · MICROCEMENT



RECEPTION · VALRENNNA



LIVING SPACE · METEORE 10



STAIR · LIME MORTAR



# Start with *a sample.*

A finish has to be touched. Tell us the systems and tones you are considering and we will prepare a physical sample box for your studio — colour-matched, on your substrate.

---

01

Choose the systems

02

We colour-match

03

Sample box to your studio

---

STUDIO

MicroIN Studio

PHONE

+1 (786) 494-7033

EMAIL

info@microin.studio

WEB

microin.studio

INSTAGRAM

@microin\_

BASED IN

South Florida